



Electric Loader SW956E



Quality Changes the World

Note: The product is continuously updated and improved, and the appearance will change; for the latest information, please confirm with the sales manager.

Economics

Economical	
Fuel Savings	87.44 RMB per hour 21,860 RMB per month (250 hours per month)
Annual Cost Reduction	280,000 RMB per year (3,000 hours per year)
5 Years Total Savings	1,400,000 RMB (Total 15,000 hours)

5T Loader Total Operating Cost			
Item	Diesel Version	SW956E5	Cost Savings
Work Time	3,000 hours per year	3,000 hours per year	/
Energy Consumption per hour	14 L per hour	38 kWh per hour	/
Price	8.2 RMB per L	0.72 RMB per kWh	/
Annual Energy Cost	344,400 RMB	82,100 RMB	262,300 RMB
Upkeeping Cost	25,200 RMB	15,300 RMB	9,900 RMB
Maintenance Cost	14,100 RMB	6,300 RMB	7,800 RMB
Annual Operating Cost	383,700 RMB	103,700 RMB	280,000 RMB
5 Years Total Cost	Operating cost of SW956E5 is 1,400,000 RMB lower than the diesel loaders		

Longer Recharge Duration

Longer Recharge Duration	<ul style="list-style-type: none"> CATL 282kWh battery Using energy recovery technology, and the recovery efficiency is more than 20% Battery intelligent temperature control system to keep working condition stable
Higher Efficiency	<ul style="list-style-type: none"> High-power permanent magnet synchronous motor, fast dynamic response Two-speed gearbox, higher transmission efficiency Integrated FNR function pilot joystick, smooth and fast shifting
Lower Power Consumption	<ul style="list-style-type: none"> High torque motor, energy consumption is over 10% lower than last generation electric loaders Static power consumption is less than 47 mA, and low standby power consumption

Advanced Configuration

Key Components	Advantages	Pictures
Battery	282 kWh battery assembly	
Motor and Electric Control System	The maximum efficiency of the motor is 95% Peak torque 2800N·m	
Transmission	Two-speed gearbox with simple structure, high efficiency and low failure rate	
Thermal Management System	Easily cope with -30°C-60°C working environment	
Frame	SANY electric loader special frame, reliable and durable	

Comfort and Maneuverability

Quieter	<ul style="list-style-type: none"> The noise level is the same as that of a car, 18dB lower than that of a fuel loader The tightness of the cab surpasses that of European and American products, and is 10% higher than that of fuel loaders Large size high-deflection glass, panoramic large space
Lower Vibration	<ul style="list-style-type: none"> Using silicone oil mounting technology, the vibration frequency of the cab is reduced to 1Hz Electric drive drivetrain reduces vibration by 30% over conventional fuel loaders
Luxurious	<ul style="list-style-type: none"> The seat design adopts ergonomic design, which is more comfortable and convenient High-power dual-purpose air conditioner, heating and cooling time compression 30%

Based on ergonomic design, it is convenient for the driver to operate

Flexible and Light Operation	HD Display and Touch Operation	Integrated Smart Control
<ul style="list-style-type: none"> Multifunctional integrated custom joystick One-button shift, fingertips charge direction 	<ul style="list-style-type: none"> All information on one screen Real-time reminder of monitoring information 	<ul style="list-style-type: none"> Auto Start Graphically integrated 16 soft keys

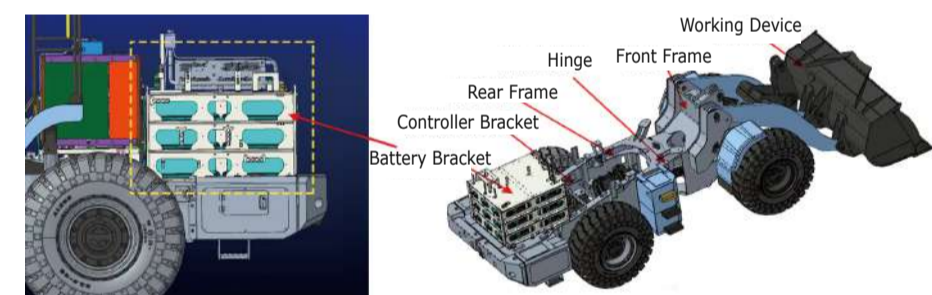
Charging Convenience

Standard Interface	Super Adaptable	Extremely Fast Charging	Dual Charging Gun Mode																
Compatible with all DC charging piles on the market	Fast charging in extreme cold or extreme heat	The theoretical charging time of charging piles above 300kW is less than 1 hour	Maximum charging current: 400A																
	<table border="1"> <thead> <tr> <th>Parameters</th> <th>Values</th> </tr> </thead> <tbody> <tr> <td>Battery Capacity</td> <td>282 kW·h</td> </tr> <tr> <td>Proper Temperature</td> <td>-30°C-60°C</td> </tr> </tbody> </table>	Parameters	Values	Battery Capacity	282 kW·h	Proper Temperature	-30°C-60°C	<table border="1"> <thead> <tr> <th>Charging Pile Power</th> <th>Charging Time</th> </tr> </thead> <tbody> <tr> <td>300kW</td> <td>50 min</td> </tr> <tr> <td>240kW</td> <td>60 min (Form 20% to 100%) 52 min (Form 20% to 95%) 41 min (Form 20% to 80%)</td> </tr> <tr> <td>120kW</td> <td>2 hour</td> </tr> <tr> <td>60kW</td> <td>4 hour</td> </tr> </tbody> </table>	Charging Pile Power	Charging Time	300kW	50 min	240kW	60 min (Form 20% to 100%) 52 min (Form 20% to 95%) 41 min (Form 20% to 80%)	120kW	2 hour	60kW	4 hour	
Parameters	Values																		
Battery Capacity	282 kW·h																		
Proper Temperature	-30°C-60°C																		
Charging Pile Power	Charging Time																		
300kW	50 min																		
240kW	60 min (Form 20% to 100%) 52 min (Form 20% to 95%) 41 min (Form 20% to 80%)																		
120kW	2 hour																		
60kW	4 hour																		

Safe and Reliable

Electrical System Safety

Battery Safety: Reasonable layout; in line with the safety requirements of the standard GB38031; when special circumstances such as collision and extrusion occur, the battery components will not have the danger of shell rupture, fire or explosion, ensuring the safety of the driver's life.



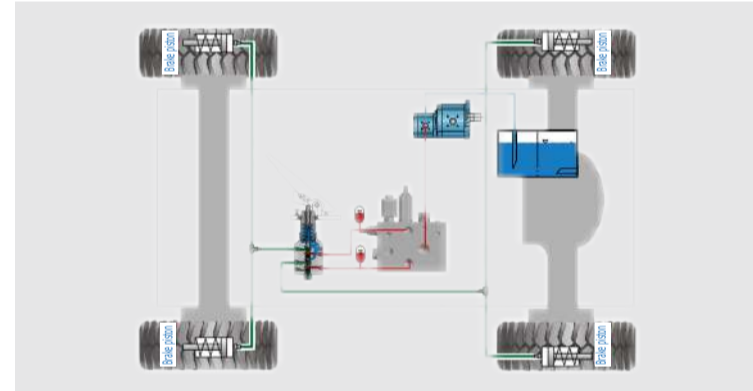
Protection Level IP67: The protection level of the battery, motor and electronic control system reaches the IP67 level, ensuring that the equipment can work normally in rainy, snowy weather and water-related conditions

Online Monitoring: Big data multiple early warning, fault prediction; client APP pushes information in real time to ensure the safety of people and equipment



Structural Reliability

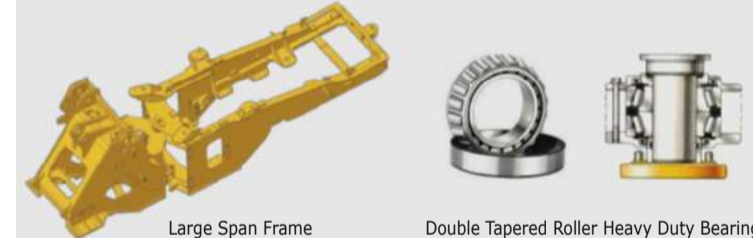
Braking System: Dual-pipe full hydraulic service braking system, sensitive response and low failure rate



Axles: 5.5T heavy-duty drive axle with strong bearing capacity and low failure rate



Frame: High-strength frame; double tapered roller bearings at the hinges



Various Attachments

3.5m³ / 4.0m³ Bucket with Cutting Edge	3.5m³ Standard Bucket	2.7m³ Rock Bucket	Side Dumping Bucket	Fork	Grapple



Longer Warranty

Machine: 2 years / 4000 hours
Electric Drive System: 5 years / 10000 hours
Battery System: 5 years / 10000 hours

Excellent Service

Service Ability

Service Network: 1187 service outlets and 28 parts center warehouses to ensure that the main service area is reached within 2 hours
Service personnel: 7000+ service personnel; Sany Industrial Career Technical College trains service personnel for electric loaders

Service Hotline: 4008 28 2318

Consultation and Complaint Hotline: 4008 28 2333

Parameters

Parameters	SW956E	Units
Rated Load	5800	kg
Operating Weight	19000	kg
Overall Dimensions	8600*2960*3540	mm
Tread	2200	mm
Wheel Base	3400	mm
Bucket Capacity	3.5	m ³
Max. Breakout Force	182	kN
Traction	167	kN
Tipping Load (Inline)	13.5	t
Cycle Time	10.5	s
F1/R	0-13	km/h
F2	0-40	km/h
Min. Turning Radius	6350	mm
Overall Height (Bucket at Max. Lifting)	5540	mm
Min. Ground Clearance	410	mm
Departure Angle	28	°
Dumping Height	3420	mm
Dumping Reach	1220	mm
Charging Time	≤1	h
Recharge Duration	6-8	h
Peak Torque of Drive Motor	2800	Nm
Peak Torque of HYD Motor	1200	Nm

Note: Due to the continuous updating of technology, equipment materials and technical specifications are subject to change without prior notice; Equipment images on this leaflet may include non-standard accessories



SANY Heavy Machinery Co., Ltd. Official WeChat

SANY Heavy Machinery Co., Ltd

Address: Sany Industrial Park, Dongcheng Avenue, Economic Development Zone, Kunshan City, Jiangsu Province
Postcode: 215300
URL: <http://www.sanygroup.com>